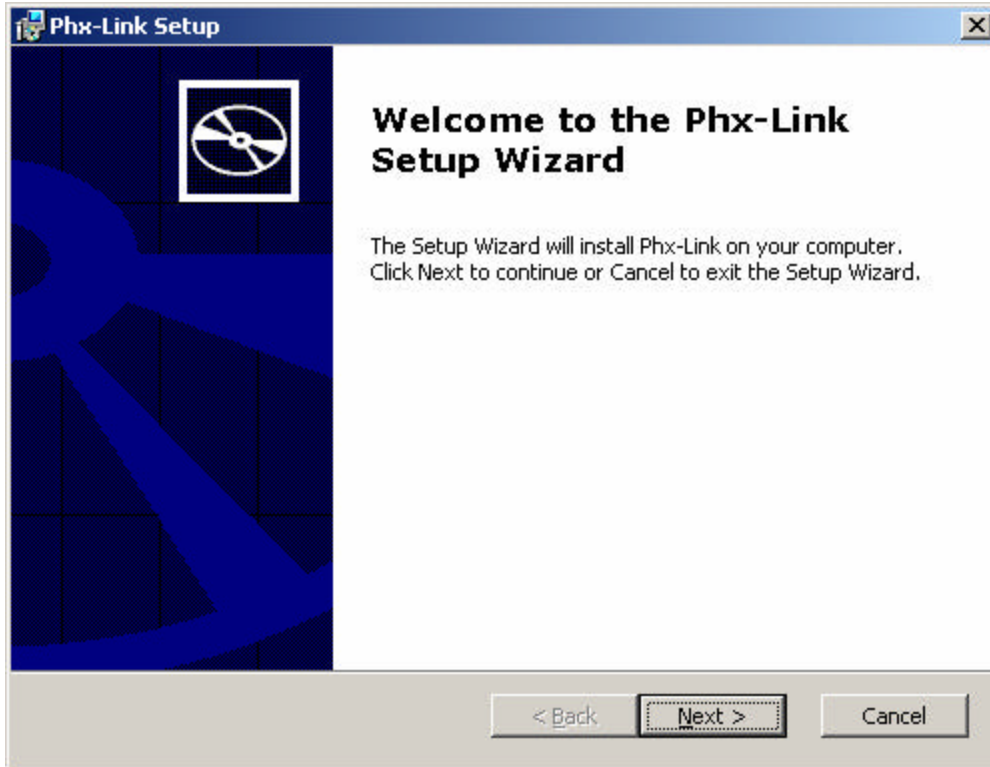


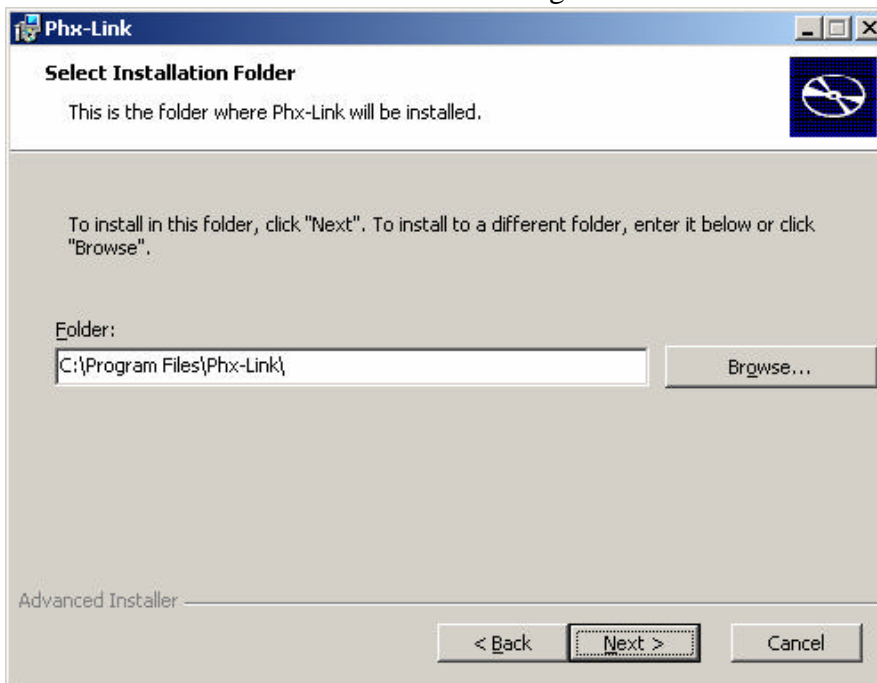


## Installation Instructions for the Phx-Link USB Programming Device

1. Click on the link for the Windows™ Software on the Castle Creations website.
2. The installation should start automatically:



3. Click the “Next” button to start installing the Phx-Link software.

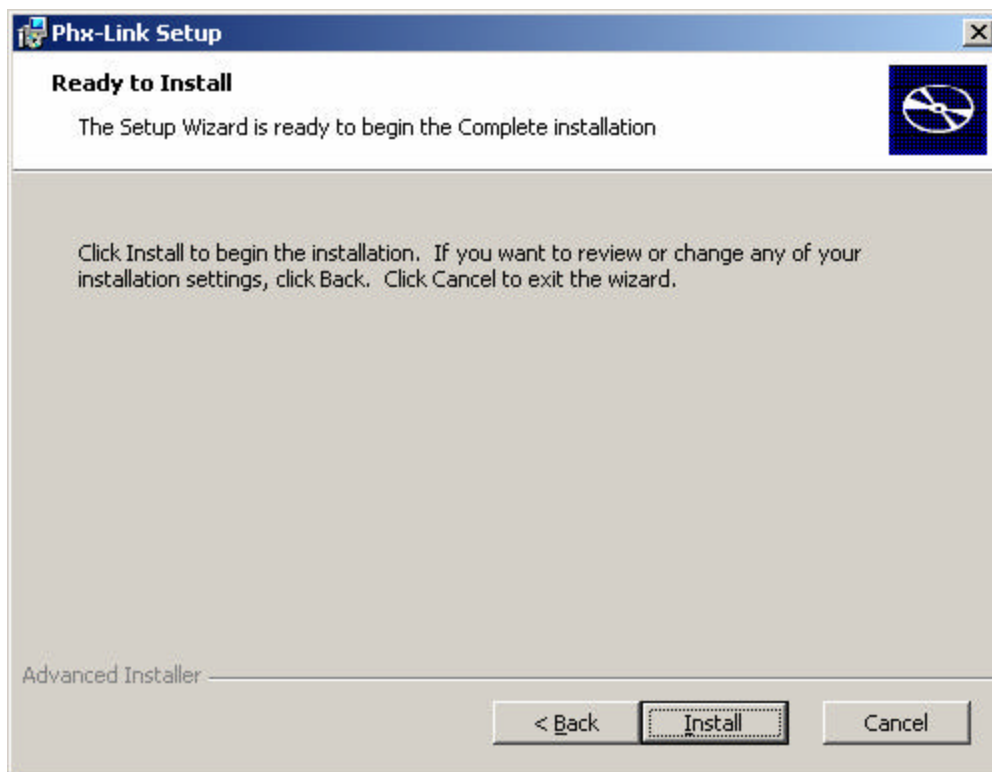




4. Most users should install the Phx-Link software to the default directory. If you wish to change the directory, either type in a new directory in the “Folder” edit box, or use the Browse button to select an Install directory.

**If you change the default directory, MAKE SURE YOU NOTE to which directory the Phx-Link is installed. You will need to know the directory name in order to install the USB driver.**

5. Click the Next button.
6. Click the Install button to install the Phx-Link software. This may take a few minutes.



7. Click the Finish button to complete installation.

**Proceed to the next section to install the Phx-Link USB driver:**



## Installing the Phx-Link USB driver:

1. PLUG the Phx-Link USB cable (small end) into the Phx-Link. Plug the large end of the Phx-Link cable into a free USB port on your computer.
2. The computer should detect the Phx-Link, and will start the driver installation automatically.



3. When the Found New Hardware Wizard appears, select the “Install from a list or specific location (Advanced)” selection as shown:

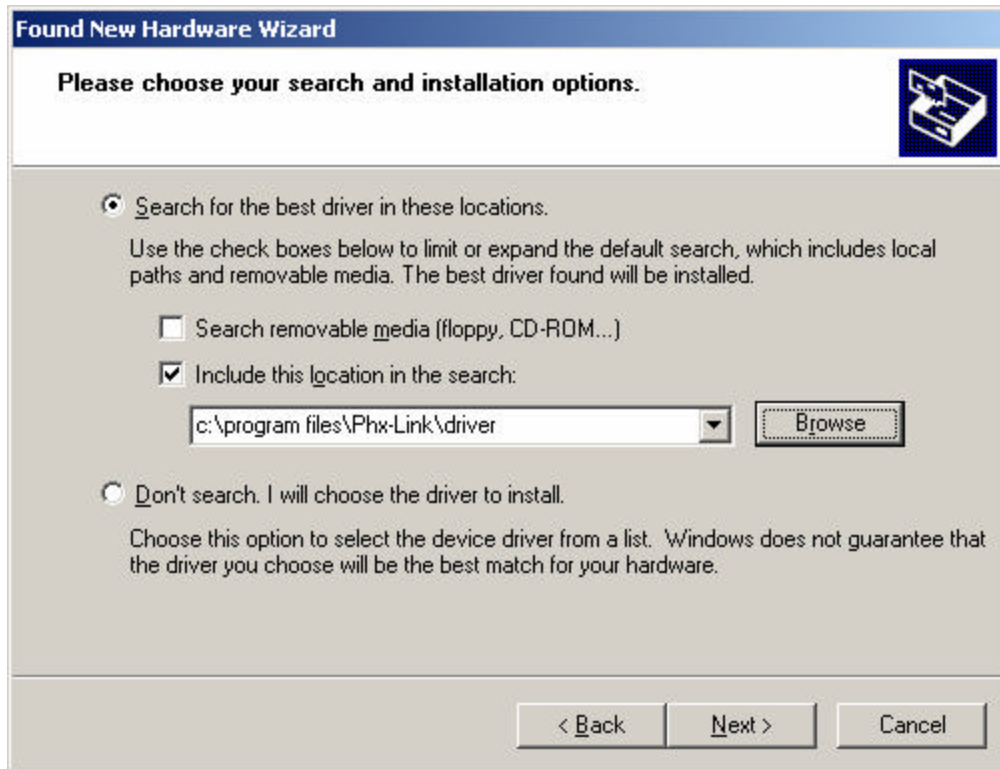


4. Click the Next button.



5. Verify that the “Search for the best driver in these locations” radio button is highlighted. Check the “Include this location in the search” checkbox. Then, either by typing the location into the edit box, or by browsing, enter the directory for the Phx-Link driver (this should be a directory named “Driver” where Phx-Link was installed in step 3.) On most installations this should be the directory:

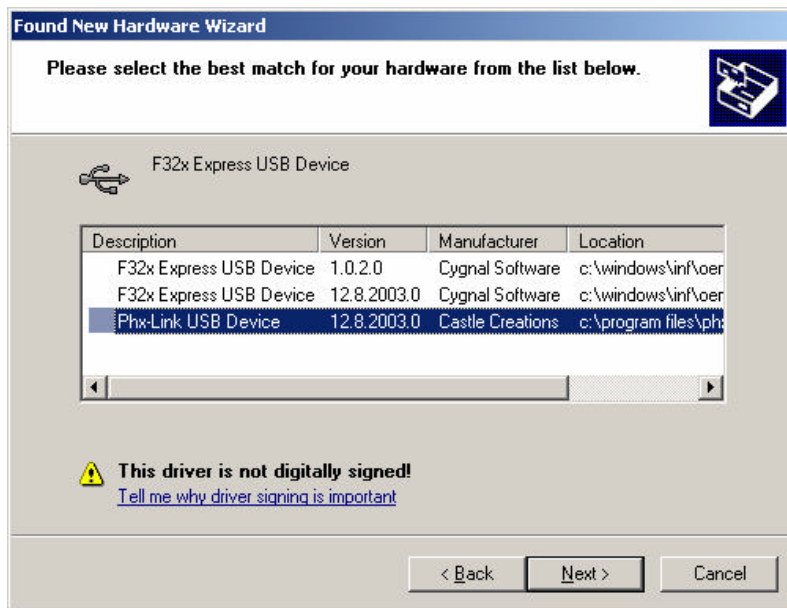
c:\program files\Phx-Link\driver



6. Click the “Next” button.



7. If windows displays a list of drivers, choose the “Phx-Link” driver.



8. Click the Next button.

9. Click “Continue Anyway.”



(The Phx-Link driver has been Windows Verified, however all of the paperwork has not yet been filed with Microsoft.)



10. Press Finish to complete installation of the Phx-Link driver.

