



# ELECTRONICALLY CONTROLLED MAGNETIC SWITCH

## MPSW15

### USER MANUAL

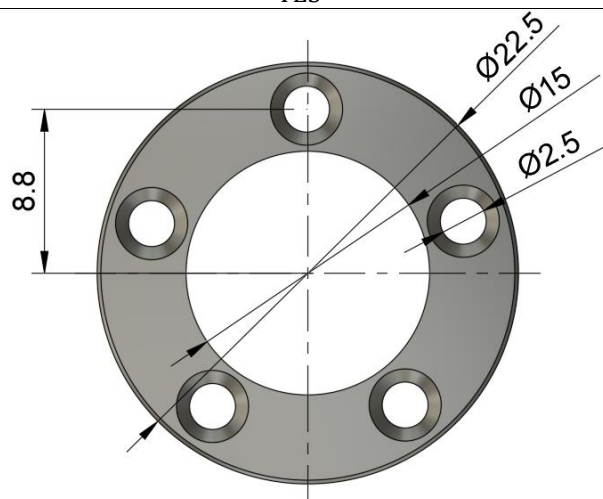
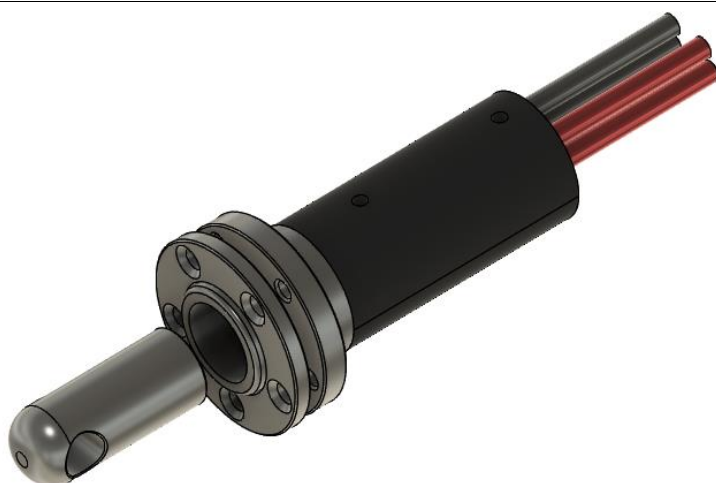
MPSW15 is a high-performance digital switch of the "REMOVE BEFORE FLIGHT" type.

It operates using magnetic activation – inserting the supplied magnetic activation pin into the opening disconnects the power (opens the circuit). Removing the pin switches the device on and activates the connected circuit. The powered-on state is indicated by illuminated LED indicators.

This system offers a safe and reliable solution for switching receivers, ignition systems, and other onboard electronics without the need for mechanical contacts.

The switch provides reliable and secure control via a magnet, supports various types of loads including inductive, and—being contactless—has no wear due to switching cycles or current flow.

Specifications	MPSW15
Dimensions	Ø22,5/Ø15 x 42 mm
Weight (incl. cables)	16 g
Cables	4x 1mm <sup>2</sup> (17AWG)
Connectors	-
Continuous current	15A
Peak current (2s)	25A
Current when off	< 3uA
Operating temperature	-20 – 85°C
Switching voltage range	5 – 17V
Status LED	YES



### INSTALLATION

Connect the device according to the markings on the product, where input and switched output are clearly indicated. Observe correct polarity:

**Red wire** = positive (+)

**Black wire** = negative (–)

We strongly recommend using polarized connectors to prevent reverse polarity, which could damage the switch. A magnet is included with the switch.

