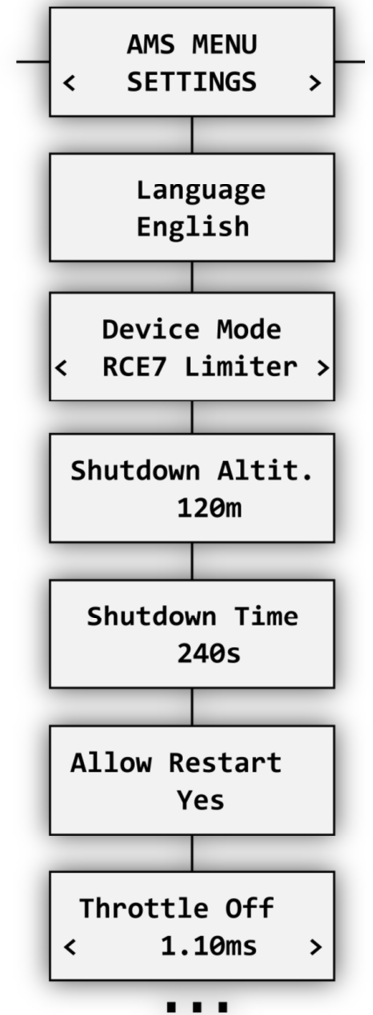


## AMS RELEASE NOTES

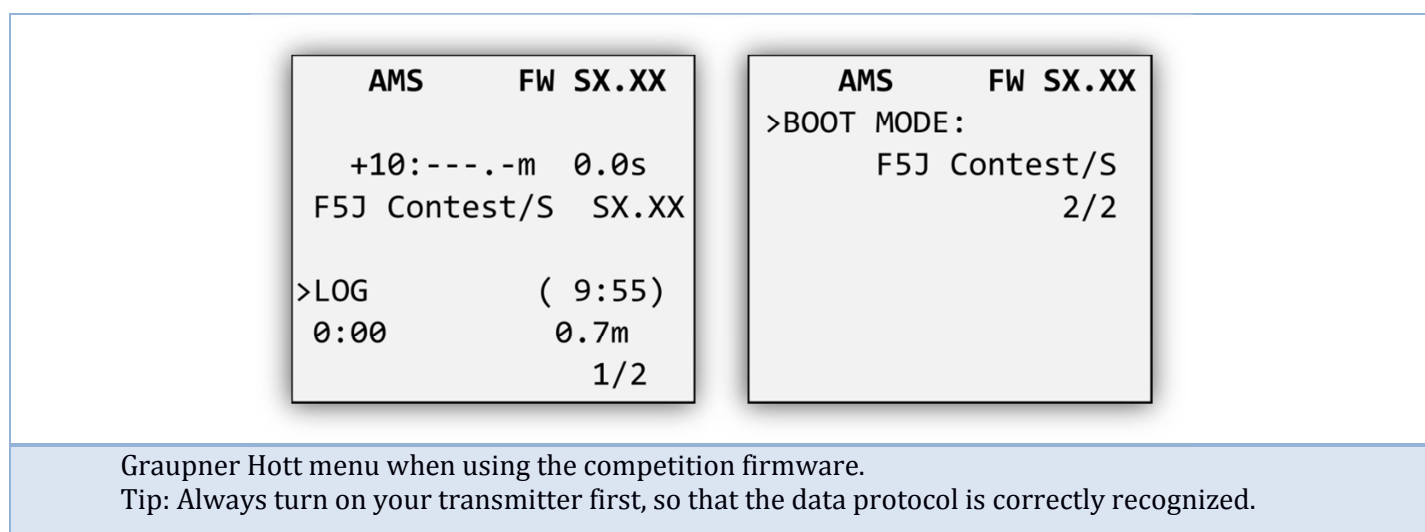
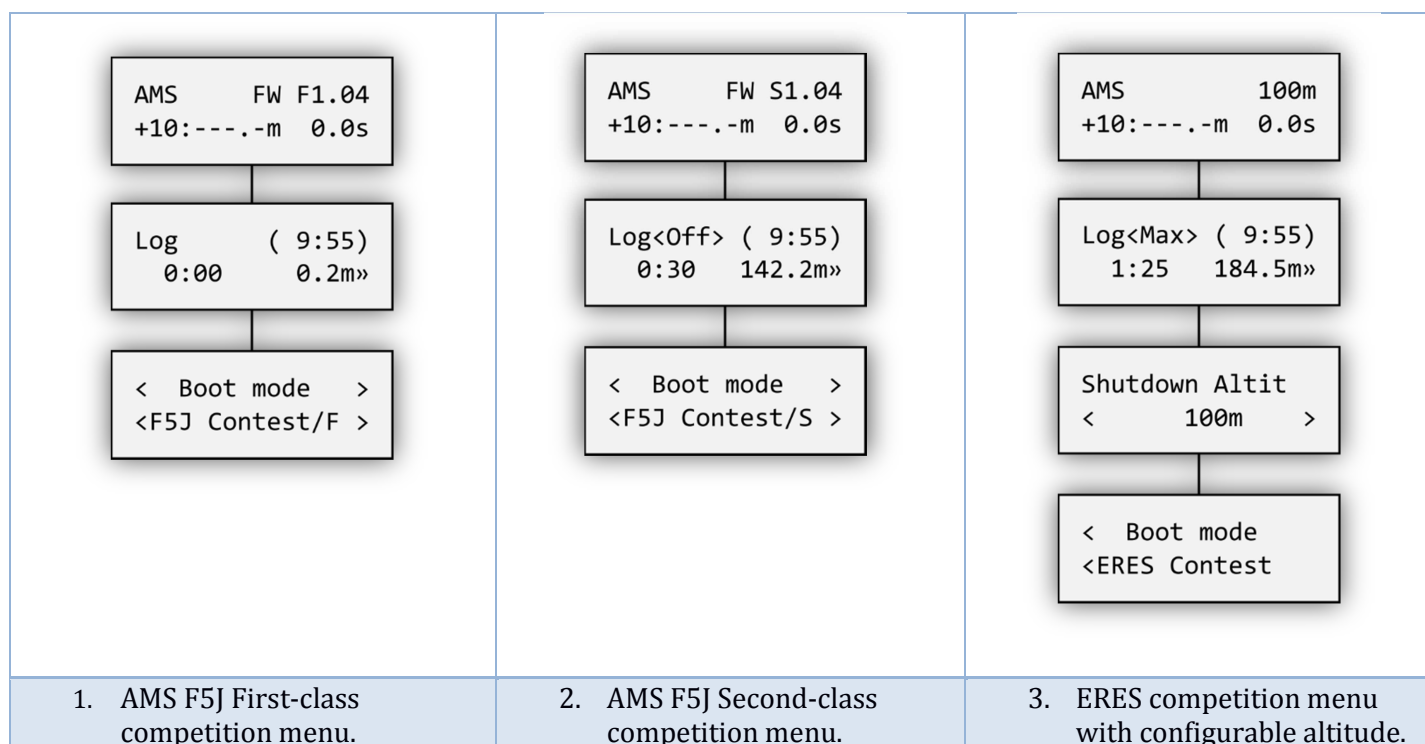
### VERSION 1.05

- Improved safety in competition categories where motor restart is allowed (ALES, F5J second class). Before enabling motor restart after it stops for any reason (altitude or time shutdown), the throttle channel must be pulled to idle position.
- Additional competition category has been introduced: RC-E7 limiter (originated in Austria):
  - Fixed maximum altitude 120m.
  - Maximum motor time 240s.
  - Motor restart is allowed as many times as the pilot wants in this interval.
  - After 240s elapses, motor (re)start is not allowed.

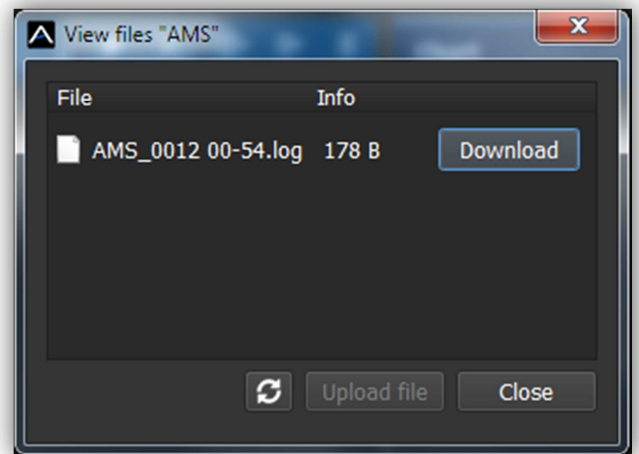
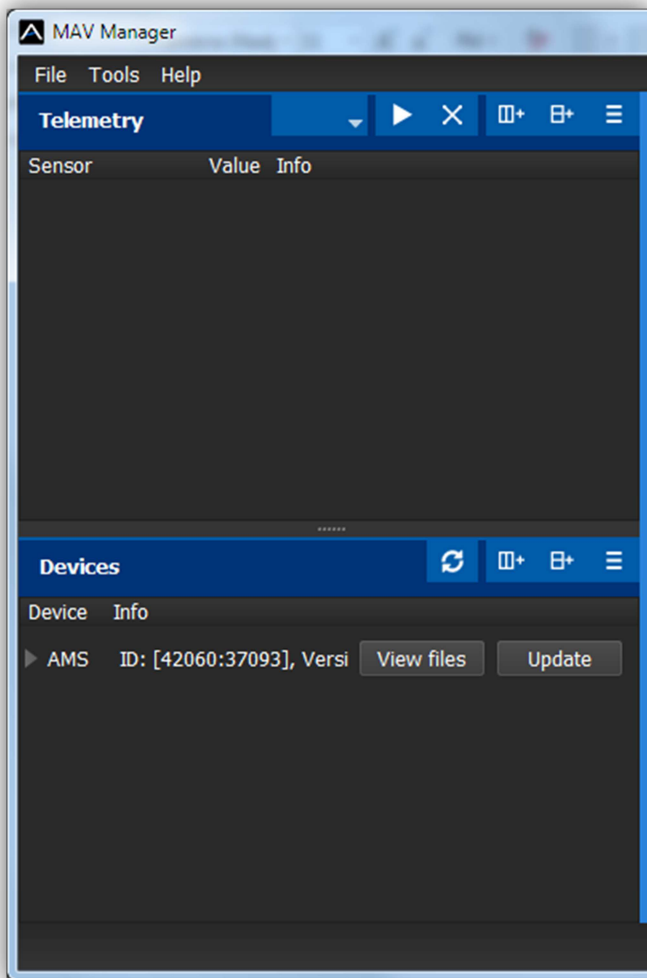


## VERSION 1.04

- F5J Certification.
- Several competition bootmodes have been created:
  - Official FAI F5J first-class competition type (firmware version F1.04). This version shall be used at main competition events, such as World Cup and/or World Championship.
  - Official FAI F5J second-class competition type (firmware version S1.04). This version can be used at all events where organizers allow emergency motor restart during the flight.
  - ERES competition type (F3-ERES) – with configurable motor shutdown altitude. Telemetry function is disabled, fixed 30s maximum motor time without restart.
- If you change any kind of settings in the competition firmware, you need to restart the device to correctly perform the next flight with applied settings.

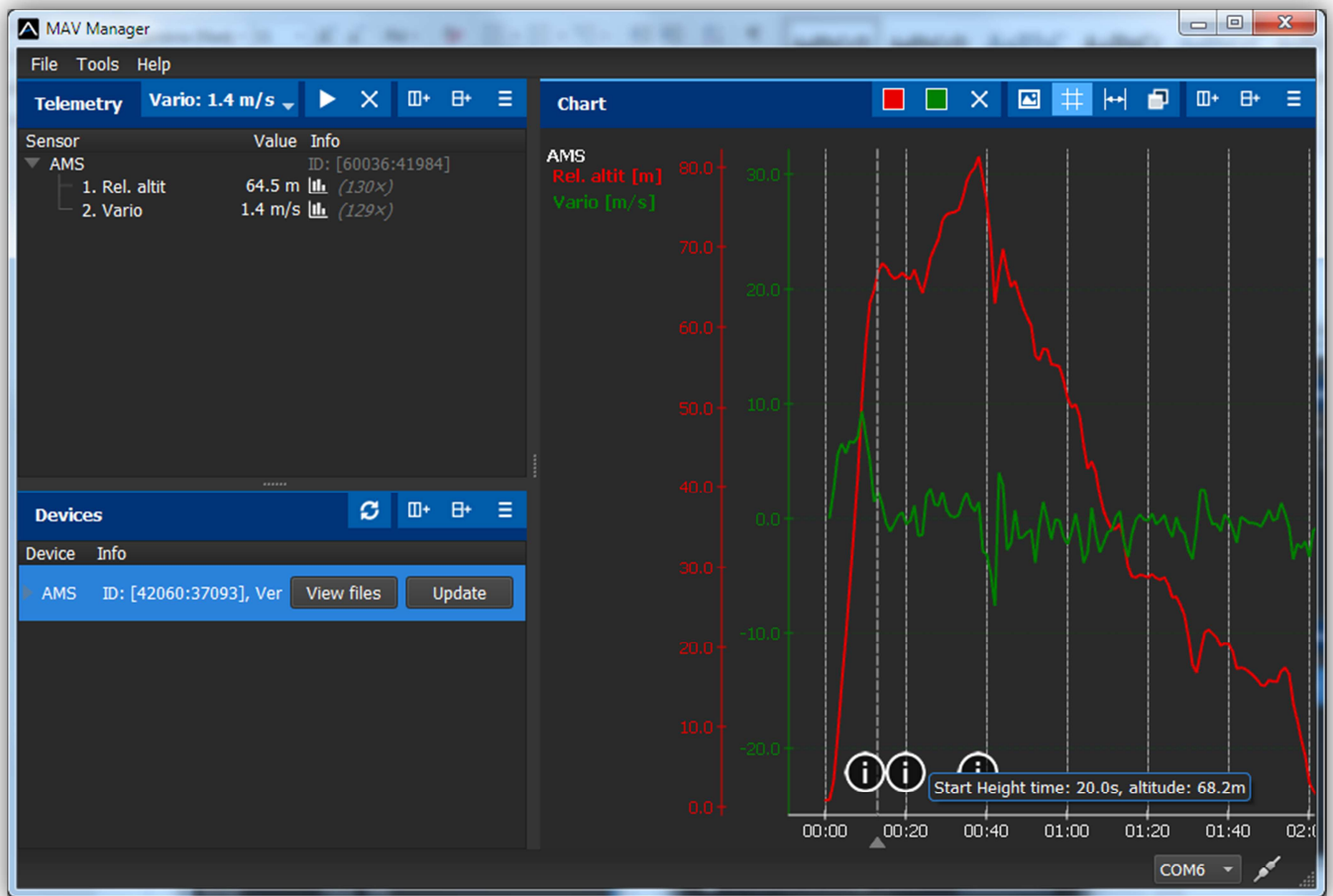


- Added logging possibility during the competition flight.
  - Logging automatically starts together with the motor and stops once the climb rate is constantly zero and the model lies on the ground. The event of successfully created log file is announced by the transmitter with the status message “Log file created”.
  - Altitude is stored in 1s interval with resolution 0.1. The device is able to store up to 16minutes of flight data, which can be later displayed on JETIBOX, SMART BOX or MAV Manager PC software version 1.1.0 or newer.
  - Additional information is stored in the log file:
    1. Motor shutdown altitude and time, marked *<Off>*.
    2. F5J-defined “Start Height” altitude and time, marked *<+10>*.
    3. Maximum reached altitude together with time, marked *<Max>*.



1. Connect the AMS to the PC using USB interface. Once the AMS is detected in the “Devices” window, press the “View files” button.

2. Select the file and press “Download”. Only the latest log file is stored within the AMS. After downloading to your PC you’ll be able to load the file immediately into MAV Manager.



## VERSION 1.03

- Initial version.